

VL

Slide Gate Valves

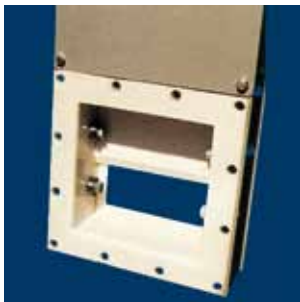
INTERNATIONAL
PATENT



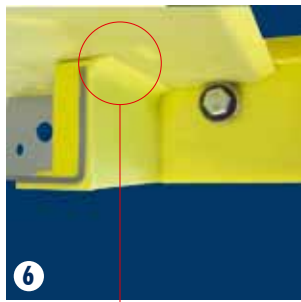
VL Slide Valves are used where the flow of a bulk solid caused by gravity or transport has to be intercepted. Valves may be fitted to hopper or silo outlets, to the inlets and outlets of mechanical conveyors and to the inlet of telescopic loading spouts.

VL-type Slide Valves consist of a two piece carbon or stainless steel frame, which is partly coated with WAM's unique SINT™ engineering polymer composite, and a sliding blade manufactured either in the same material or in stainless steel. The use of SINT™ engineering polymer considerably increases resistance to abrasion compared to traditional valves.

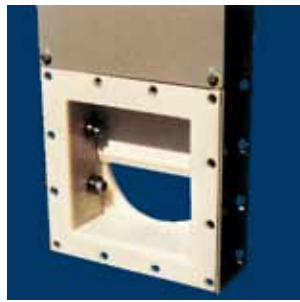
The special geometry of the Valve and the different options of blade design enable its application in virtually every sector including the food industry.



VLQ - VLR - VLS



6

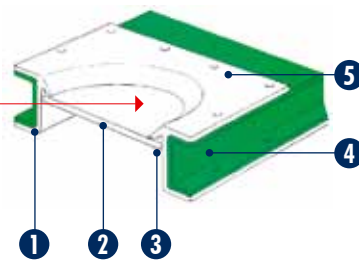
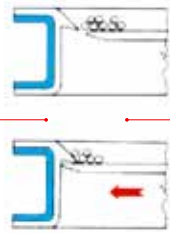
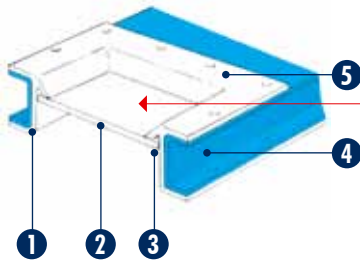


VLC



3 interchangeable actuators for valve types VLQ-VLC-VLR

3
VLQ-VLC-VLR



- ① Valve body coated with SINT™MC or SINT™AL in order to avoid contact between product and body.
- ② Heavy-duty blade (SINT™MC / SINT™AL, carbon steel, 304 st.st.)
- ③ Minimum friction contact
- ④ No additional lateral seals required
- ⑤ Dry food quality (coating in SINT™AL)
- ⑥ Dustproof (scraper included)

- ① SINT™ SINT™AL,
- ② 304 (SINT™ / SINT™AL).
- ③
- ④
- ⑤ (SINT™AL).
- ⑥ ()

User Benefits

- Easy to handle
- Ex-stock delivery
- Highly abrasion-resistant
- Easy to fit
- Time-saving maintenance

Options

- Valve manufactured in carbon steel lined and coated with SINT™MC.
- Valve in 304 stainless steel lined and coated with SINT™AL (FDA-approved)

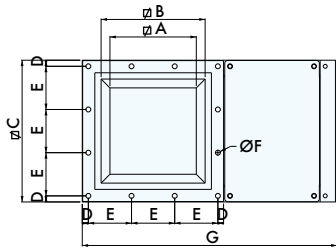
SINT™AL ()

SINT™ ;

304,

VLQ

Square Cross Section Valves



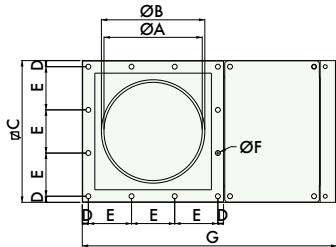
TYPE	A	B	C	D	E	N°E	Ø F	Bolts	G	H	kg
VLQ0150..	120	175	261	15,5	115,0	2	12,5	M10	455	113	14
VLQ0200..	170	225	311	15,5	93,3	3	12,5	M10	555	113	18
VLQ0250..	220	275	361	15,5	110,0	3	12,5	M10	650	113	22
VLQ0300..	270	325	431	23,0	128,3	3	12,5	M10	765	113	30
VLQ0350..	320	375	481	18,0	89,0	5	12,5	M10	900	125	40
VLQ0400..	370	425	531	15,5	100,0	5	12,5	M10	1.000	125	46

- 1 Carbon Steel /
- 3 304 Stainless Steel /

304

VLC

Round Cross Section Valves



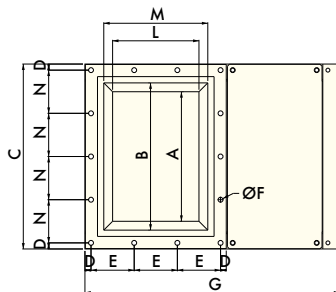
TYPE	A	Ø B	Ø C	D	E	N°E	Ø F	Screw	G	H	kg
VLC0150..	150	165	261	15,5	115,0	2	12,5	M10	455	113	14
VLC0200..	200	215	311	15,5	93,3	3	12,5	M10	555	113	18
VLC0250..	250	265	361	15,5	110,0	3	12,5	M10	650	113	22
VLC0300..	300	315	431	23,0	128,3	3	12,5	M10	765	113	30
VLC0350..	350	365	481	18,0	89,0	5	12,5	M10	900	125	40
VLC0400..	400	415	531	15,5	100,0	5	12,5	M10	1.000	125	46

- 1 Carbon Steel /
- 3 304 Stainless Steel /

304

VLR

Rectangular Cross Section Valves

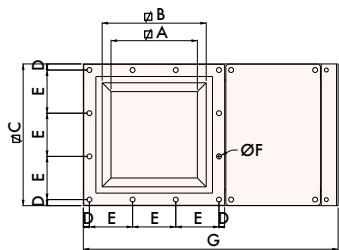


TYPE	A	B	C	D	E	N°E	Ø F	Bolts	G	H	L	M	N	N°N	kg
* VLR0150..	204	260	346	15,5	115,0	2	12,5	M10	455	109	119	175	105	3	18
* VLR0200..	281	337	423	15,5	93,3	3	12,5	M10	555	109	169	225	98	4	25
* VLR0250..	353	409	495	15,5	110,0	3	12,5	M10	650	109	219	275	116	4	30
VLR0300..	428	484	592	23,0	128,3	3	12,5	M10	765	109	269	325	136	4	40

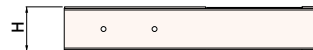
* Not yet in production /

- 1 Carbon Steel /
- 3 304 Stainless Steel /

304



Slide Valve With Internal Actuator



TYPE	A	B	C	D	E	N° E	Ø F	Bolts	G	H	kg
VLS0150..	120	175	261	15,5	115,0	2	12,5	M10	455	113	16,5
VLS0200..	170	225	311	15,5	93,3	3	12,5	M10	555	113	21,0
VLS0250..	220	275	361	15,5	110,0	3	12,5	M10	650	113	25,5
VLS0300..	270	325	431	23,0	128,3	3	12,5	M10	765	113	34,0

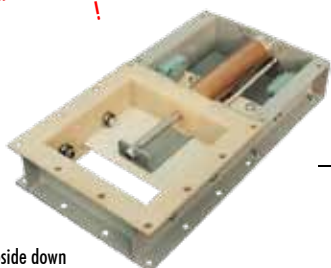
1 Carbon Steel /
3 304 Stainless Steel / 304

Valve with single type of actuator (pneumatic cylinder Ø 63 mm) mounted inside the valve frame.

(D= 63)

Pneumatic Actuator Compatibility -

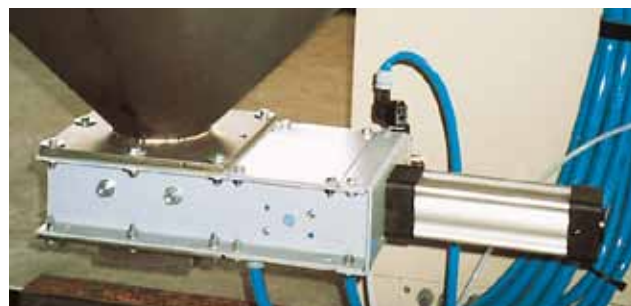
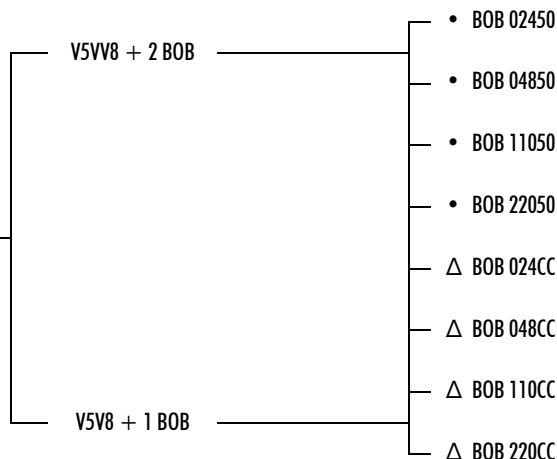
No headload allowed!



Valve viewed upside down

- ALTERNATING CURRENT
- DIRECT CURRENT
- △

- VLS 0150 ..
- VLS 0200 ..
- VLS 0250 ..
- VLS 0300 ..



HAND WHEEL COMPATIBLY
KOMBINATIONSMÖGLICHKEITEN MIT HANDRAD
ACCOUPEMENTS D'ACTIONNEUR MANUEL
ABBINAMENTI DI ATTUATORE MANUALE

VLQ - VLC 0150 ..	-	CMG0150 I.
VLQ - VLC 0200 ..	-	CMG0200 I.
VLQ - VLC 0250 ..	-	CMG0250 I.
VLQ - VLR-VLC 0300 ..	-	CMG0300 I.
VLQ - VLC 0350 ..	-	CMG0350 I.
VLQ - VLC 0400 ..	-	CMG0400 I.



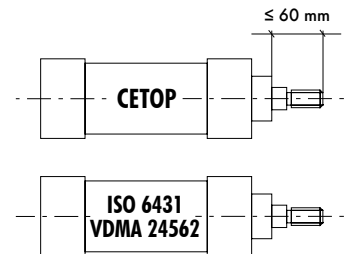
PNEUMATIC ACTUATOR COMPATIBLY
KOMBINATIONSMÖGLICHKEITEN MIT PNEUMATIKANTRIEB
ACCOUPEMENTS D'ACTIONNEUR ELECTROPNEUMATIQUE
ABBINAMENTI DI ATTUATORE ELETTROPNEUMATICO

VLQ - VLC 0150 ..	●	P.N. CYL. Ø 63	-	KCP 063 1525 - V5V80 - LSM6	• BOB 02450
VLQ - VLC 0200 ..	}	●	P.N. CYL. Ø 80	- KCP 080 1530 - V5V80 - LSM6	• BOB 04850
VLQ - VLC 0250 ..					• BOB 11050
VLQ - VLR-VLC 0300 ..	}	●	P.N. CYL. Ø 100	- KCP 100 3540 - V5V40 - LSM6	• BOB 22050
VLQ - VLC 0350 ..					△ BOB 024CC
VLQ - VLC 0400 ..					△ BOB 048CC
					△ BOB 110CC
					△ BOB 220CC



- ALTERNATING CURRENT
- WECHSELSTROM
- COURANT ALTERNATIF
- CORRENTE ALTERNATA
- △ DIRECT CURRENT
- △ GLEICHSTROM
- △ COURANT CONTINU
- △ CORRENTE CONTINUA

● No WAM supply
 Fremdfabrikat beizustellen
 Hors fourniture WAM
 Non forniture WAM



GEAR MOTOR COMPATIBLY
KOMBINATIONSMÖGLICHKEITEN MIT GETRIEBEMOTOR
ACCOUPEMENTS D'ACTIONNEUR ELECTRIQUE
ABBINAMENTI DI ATTUATORE CON MOTORIDUTTORE

VLQ - VLC 0150 ..	-	CRG010A150 I	LSM6*
VLQ - VLC 0200 ..	-	CRG010A200 I	
VLQ - VLC 0250 ..	-	CRG010B250 I	
VLQ - VLR - VLC 0300 ..	-	CRG010B300 I	
VLQ - VLC 0350 ..	-	CRG010B350 I	
VLQ - VLC 0400 ..	-	CRG010B400 I	

* Signalling system obligatory
 Positionsanzeige erforderlich
 Systeme de signalation indispensable
 Sistema indispensabile di segnalazione



Further Products - Weitere Produkte - Autre production - Altra produzione



UNI EN ISO 9001-2000
Certified Company

www.wamgroup.com